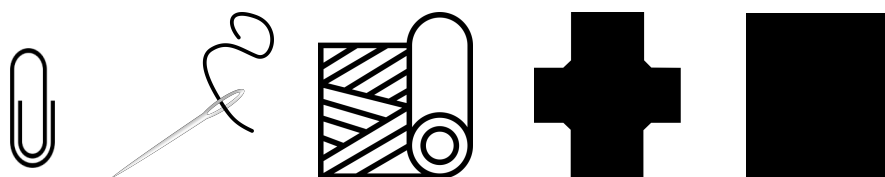


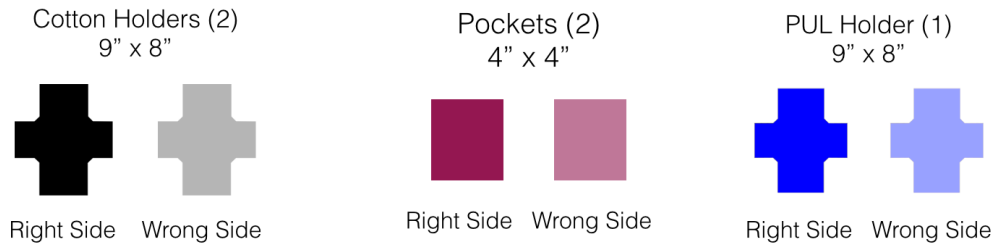
# Precious Ones

Kit Sewing Guide



## Sewing the Holder

- *Materials*
  - 2 holder pieces (dark geometrical or floral patterned cotton)
  - 2 pocket squares (also dark cotton, but doesn't have to match)
  - 1 holder piece (PUL)
  - Thread (dark cotton)



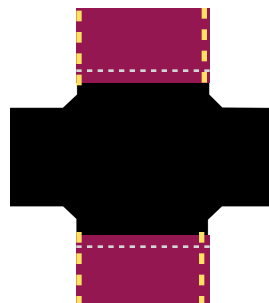
- Press all of the fabric and also fold the pocket squares in half wrong sides together and press



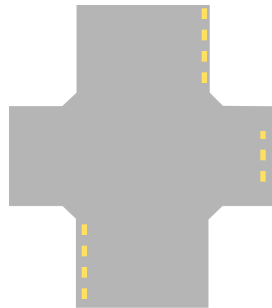
- *Sewing-*
  - Topstitch the pocket squares along the pressed folded side



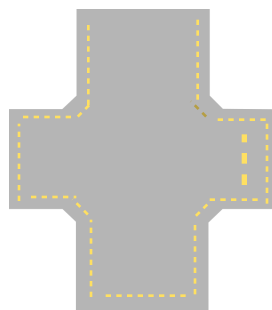
- Baste stitch the pocket piece to one cotton holder piece along the side edges—it should have the topstitched edge toward the middle and right sides together with raw edges lined up



- Putting the holder together-
  - Line up the pieces in the following order:
    - PUL holder piece shiny side up
    - Cotton holder piece, with pockets, right side up
    - Other cotton holder piece wrong side up
  - Line up the raw edges and use paper clips or wonder clips to hold the layers together or baste stitch at the pocket edges to hold the layers in place (Make sure no pins are used in order to keep the PUL layer waterproof)
  - Mark the holder piece without the pockets with a basting stitch on one of the side flaps

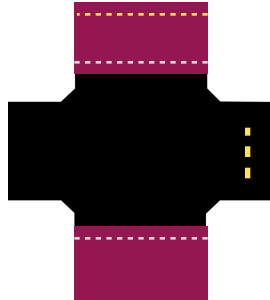


- Sew a 1/4" seam around all the layers leaving one pocket top edge open

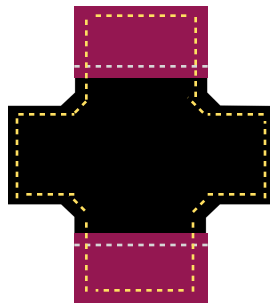


- Check seams and clip corners

- Flip, between the cottons pieces, right side out through the opening--have the pocket flaps on the same side as the basting stitch layer--push out the corners
- Press the seams flat and sew the open pocket edge closed



- Turn the pockets to the side without the basting stitch and press
- Topstitch around the holder edges and remove the basting stitch



## Sewing the Liners

- *Materials-*
  - Thread (dark cotton)
  - 8 black flannel squares (8.5" x 8.5")

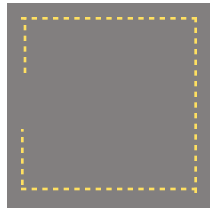


Right Side

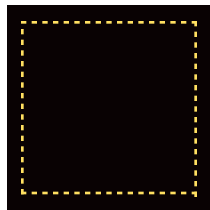


Wrong Side

- *Sewing-*
  - Take two flannel squares right sides together, sew a 1/4" seam leaving a 2-3" opening on one side



- Clip the corners and flip right side out through the opening--press the seams flat and tuck in the fabric at the opening
- Topstitch along the edge of the liner (making sure to close the opening)



- Fold the liner at the 2.5" mark and press. Fold the other side at that spot--the folded liner should be about 3" wide
- Repeat these steps with the remaining flannel pieces.